



Gyrfa Cymru  
Careers Wales

Careers Wales LMI Bulletin: August 2020

# Impact of the COVID-19 pandemic on the labour market in Wales

Issue 4 : Published: 31 August 2020  
Date of next issue: September 2020





We are still uncertain of the full economic impact Covid-19 is having on Wales. During July and August, we continued to read press announcements of redundancies across the UK and Wales, these continue to be across a range of different sectors. 29% of Businesses were either making a loss or breaking even, with just under half reporting that their turnover had decreased below what is normally expected for this time of year (ONS, Aug 2020). However, some signs of recovery as the number of job adverts increased by the largest increase since the beginning 2020. Footfall in high streets, retail parks and shopping centres has risen to 75% of the level a year ago (in previous weeks this was running at 60%).

We continue to welcome feedback from staff on the relevance of the data and key messages included in this bulletin.

**Please send your feedback to [information@careerswales.gov.wales](mailto:information@careerswales.gov.wales).**

### The topics featured in this issue:

1. Introduction
2. Summary stats (June 2020) and key themes emerging: a monthly summary
3. Welsh Government responses
4. Impact on job postings in Wales
5. Occupations most severely impacted or experiencing growth
6. Skills in demand in Wales
7. Sectors most severely impacted by the COVID-19 Crisis
8. Redundancies
9. Unemployment/Employment, Claimant count and Universal Credit; March-May 2020
10. Key Coronavirus update and support links

### Data use caution:

We need to use LMI data with caution in the current environment, please see Cautionary notes at the end of the bulletin.



### Summary stats

- The upward trend in the number of job postings in Wales continued during July 20. Monthly online unique job postings rose by nearly 6,000 job postings in July, an increase of 13% on the previous month, June 20.
- Job posting numbers remain down from their pre-crisis numbers of 55,756 in February 20 and are also still less than the numbers for the same time last year, July 2019, but the continuing upward trend is positive.
- The Top 10 occupations with the highest total number of active job postings in the latest 30 days in Wales remain the same:
  - Nurses
  - Care workers and home carers
  - Van drivers
  - Medical practitioners
  - Elementary storage occupations
  - Sales accounts and business development managers
  - Cleaners and domestics
  - Other administrative occupations n.e.c.
  - Primary and nursery education teaching professionals
  - Programmers and software development professionals
- Top 10 occupations with the highest increasing demand (the highest % increase) in the latest 30 days of active job postings in Wales include:
  - Bar staff
  - Beauticians and related occupations
  - Waiters and waitresses
  - Estate agents and auctioneers
  - Chefs
  - Carpenters and joiners
  - Construction project managers and related professionals
  - Elementary construction occupations
  - Plumbers and heating and ventilating engineers
  - Receptionists



In July we continue to see large % increases in demand for Hospitality staff and Beauticians, but we also see a jump in demand for Estate Agents as the housing market enters a mini boom, as well as the Construction trades, Carpenters and Plumbers and Project Managers.

- During July 20 there was a tail off in demand for Primary and Nursing education professionals and other education roles.

The top 5 'Hard' Skills (job specific skills) in demand in Wales remain:

- Nursing
- Auditing
- Mental Health
- Personal Care
- Key Performance Indicators (KPI's)

The top 5 'Common' Skills (common to many jobs) in demand in Wales remain:

- Communications
- Management
- Customer Service
- Enthusiasm
- Sales

- The number of workers furloughed across all industries in the UK, had fallen to 14%, at August 13, 2020 (22% the month before).
- Whilst it remains the sector with the highest number of furloughed workers, at 46%, the arts, entertainment and recreation sector reported the highest proportion of the workforce returning from furlough leave in the last two weeks, at 25%, followed by the accommodation and food service activities sector and the construction sector, at 17% and 10% respectively.
- The number of redundancies per 1000 workers across all sectors in the UK, rose again to 4.8 for the latest 3 month rolling period, April to June 2020. These latest figures continue to reflect the growing number of companies reporting job losses.
- The LFS: ILO unemployment rate for Wales remained at 2.7%, Apr-Jun 2020, compared to 3.9% for the UK

## 2. Summary stats (July 2020) and key themes emerging: a monthly summary



Gyrfa Cymru  
Careers Wales

- Employment rate in Wales increased slightly to 75.3%. Apr-Jun 20, consistently lower than for the UK as a whole (76.4%)
- In July, claimant rate rose to 8% in Wales and 7.5% in the UK, Claimant count numbers have more than doubled in Wales and the UK since 2020.

### Emerging themes

- [Job adverts reach a new post-lockdown high in first week of Augusts \(Emsi and the Recruitment & Employment Confederation : \(Job Recovery Tracker, August 2020\)](#)
- [Demand for workers picks up in early August \(BBC, August 2020\)](#)
- [UK retailers cutting jobs at fastest rate since 2009, CBI says \(Guardian, August 2020\)](#)
- [A Levels U-turn: Government considering lifting cap on medicine places \(BBC, August 2020\)](#)
- [Wales in recession for first time in 11 years \(BBC August 2020\)](#)
- [Coronavirus and the latest indicators for the UK economy and society \(ONS, Sept 2020\)](#)

### Some good news

- [Cardiff Hendre lakes development will create 6000 jobs \(South Wales Argus, August 2020\)](#)
- [Ceredigion welcomes two new independent businesses \(Tivy Advertiser, August, 2020\)](#)
- [78 Jobs at North Wales holiday parks \(BBC, August 2020\)](#)
- [UK Kickstart work scheme to support 16-24 year olds from November \(BBC, September 2020\)](#)
- [Amazon steps up hiring spree with push for 7,000 new staff in UK \(Guardian, September 2020\)](#)



- Business Wales can help firms minimise the effects of Covid-19 says Economy Minister
- 100 new jobs at Cardiff software company with support from the WG's Economy Future Fund
- Findings of the Wales Tourism Business COVID-19 Barometer show that an extended period of staycations through autumn is needed to boost business
- Economic resilience fund provides critical support to UK's leading supplier of bakery equipment

## 4. Impact on job postings in Wales



Gyrfa Cymru  
Careers Wales

Online Job postings give the first indication of the scale of the impact on the job market. The absolute numbers should be used with caution as they provide only a snapshot of the total recruitment picture. By their nature, posting numbers fluctuate daily, and the method of collection is constantly being improved, but the general trends seen can give us an idea of how job opportunities in Wales are being impacted.

### Recruitment trend in Wales 2020

The upward trend in the number of job postings in Wales continued during July 20. Monthly online unique job postings rose by nearly 6000 job postings in July, an increase of 13% on the previous month, June 20.

Job posting numbers remain down from their pre-crisis numbers of 55,756 in February 20 and are also still less than the numbers for the same time last year, July 2019, but the continuing upward trend is positive.

### Monthly Online Job Postings In Wales Since January 2017



Source: Emsi Job Posting Analyst

	Unique Job postings	% Monthly change	Posting Intensity (number of postings per unique job vacancy)
January 2020	49,011		6.1
February 2020	55,756	+13.8%	6.1
March 2020	53,376	-4.3%	6.1
April 2020	43,738	-18%	7.1
May 2020	40,214	-8%	7.1
June 2020	44,158	+9.8%	6.1
July 2020	50,068	+13.4%	6.1

## 5. Occupations most severely impacted or experiencing growth



Gyrfa Cymru  
Careers Wales

### Top posted occupations in the latest 30 days; July 20th-Aug 18th, 2020

The Top 10 occupations with the highest total number of active job postings in the latest 30 days for Wales remain the same:

- Nurses
- Care workers and home carers
- Van drivers
- Medical practitioners
- Elementary storage occupations
- Sales accounts and business development managers
- Cleaners and domestics
- Other administrative occupations n.e.c.
- Primary and nursery education teaching professionals
- Programmers and software development professionals

The top 3 occupations with the highest total number of active job postings in Wales in the latest 30 days recruitment were:

- Nurses
- Care workers and home carers
- Van drivers

**Table: 1 Total Number Of Unique Job Postings (Active) In Wales In The Latest 30 Days**  
(July 20th - Aug 18th, 2020)

Occupation (SOC)	Latest 30 days <sup>1</sup> Unique Postings (Active)	Latest 30 days Unique Postings % Change <sup>2</sup> (Active)	Avg. Posting Intensity <sup>3</sup> (May 2020 - Jun 2020)
Nurses	4,449	3.6%	9 : 1
Care workers and home carers	2,496	6.7%	7 : 1
Van drivers	1,270	37.6%	5 : 1
Medical practitioners	1,175	19.2%	5 : 1
Elementary storage occupations	1,169	14.9%	6 : 1
Sales accounts and business development managers	1,159	15.4%	5 : 1
Cleaners and domestics	1,059	8.2%	6 : 1
Other administrative occupations n.e.c.	990	10.1%	5 : 1



## 5. Occupations most severely impacted or experiencing growth



Gyrfa Cymru  
Careers Wales

Occupation (SOC)	Latest 30 days <sup>1</sup> Unique Postings (Active)	Latest 30 days Unique Postings % Change <sup>2</sup> (Active)	Avg. Posting Intensity <sup>3</sup> (May 2020 - Jun 2020)
Primary and nursery education teaching professionals	920	(17.1%)	9 : 1
Programmers and software development professionals	906	(2.8%)	9 : 1
Metal working production and maintenance fitters	805	5.0%	7 : 1
Teaching assistants	768	(4.0%)	10 : 1
Nursing auxiliaries and assistants	762	14.9%	6 : 1
Sales and retail assistants	730	21.7%	5 : 1
Social workers	701	14.0%	6 : 1
Kitchen and catering assistants	687	42.8%	5 : 1
Business and financial project management professionals	678	23.7%	6 : 1
Book-keepers, payroll managers and wages clerks	653	5.8%	8 : 1
Customer service occupations n.e.c.	617	1.8%	5 : 1
Finance and investment analysts and advisers	615	(7.2%)	6 : 1
Production managers and directors in manufacturing	604	5.6%	7 : 1
Business sales executives	587	22.8%	5 : 1
Secondary education teaching professionals	586	6.0%	9 : 1
Human resources and industrial relations officers	561	8.1%	6 : 1
Solicitors	556	12.3%	6 : 1
Managers and directors in storage and warehousing	531	23.8%	7 : 1
Customer service occupations n.e.c.	617	1.8%	5 : 1
Finance and investment analysts and advisers	615	(7.2%)	6 : 1
Production managers and directors in manufacturing	604	5.6%	7 : 1
Business sales executives	587	22.8%	5 : 1
Secondary education teaching professionals	586	6.0%	9 : 1
Human resources and industrial relations officers	561	8.1%	6 : 1
Solicitors	556	12.3%	6 : 1
Managers and directors in storage and warehousing	531	23.8%	7 : 1

Source: Emsi Job Posting Analyst

<sup>1</sup> Latest 30 days: July 20th-Aug 18th, 2020

<sup>2</sup> Latest 30 days % change: Comparing June 20th-July 19th to July 20th-Aug 18th

<sup>3</sup> Posting intensity = number of postings per unique job vacancy

## 5. Occupations most severely impacted or experiencing growth



Gyrfa Cymru  
Careers Wales

### Occupations with increasing demand in the latest 30 days; July 20th-Aug 18th, 2020

Top 10 occupations with the highest increasing demand (the highest % increase) in the latest 30 days of active job postings in Wales include:

- Bar staff
- Beauticians and related occupations
- Waiters and waitresses
- Estate agents and auctioneers
- Chefs
- Carpenters and joiners
- Construction project managers and related professionals
- Elementary construction occupations
- Plumbers and heating and ventilating engineers
- Receptionists

In July we continue to see large % increases in demand for Hospitality staff and Beauticians, but we also see a jump in demand for Estate Agents as the housing market enters a mini boom, as well as the Construction trades, Carpenters and Plumbers and Project Managers.

#### Data use caution:

Remember a high % change does not necessarily mean the highest total number of active vacancies. Job posting figures fluctuate from day to day.

## 5. Occupations most severely impacted or experiencing growth



Gyrfa Cymru  
Careers Wales

**Table: 2 Total Number Of Unique Job Postings (Active) In Wales In The Latest 30 Days**  
(20th-Aug 18th, 2020)

<b>Occupation (SOC)</b> (Occupations with >50 postings in latest 30 days)	<b>Latest 30 Days<sup>1</sup></b> <sup>1</sup> Unique Postings (Active)	<b>Latest 30 Days Unique Postings % Change<sup>2</sup></b> (Active)
Bar staff	202	<b>254.4%</b>
Beauticians and related occupations	94	<b>235.7%</b>
Waiters and waitresses	56	<b>166.7%</b>
Estate agents and auctioneers	78	<b>105.3%</b>
Chefs	460	<b>74.2%</b>
Carpenters and joiners	177	<b>59.5%</b>
Construction project managers and related professionals	81	<b>58.8%</b>
Elementary construction occupations	149	<b>58.5%</b>
Plumbers and heating and ventilating engineers	170	<b>53.2%</b>
Receptionists	226	<b>51.7%</b>
Catering and bar managers	68	<b>44.7%</b>
Medical and dental technicians	76	<b>43.4%</b>
Food, drink and tobacco process operatives	96	<b>43.3%</b>
Kitchen and catering assistants	687	<b>42.8%</b>
Managers and proprietors in other services n.e.c.	104	<b>42.5%</b>
Mobile machine drivers and operatives n.e.c.	230	<b>41.1%</b>
Sales supervisors	59	<b>40.5%</b>
Construction operatives n.e.c.	247	<b>39.5%</b>
Large goods vehicle drivers	298	<b>38.0%</b>
Van drivers	1,270	<b>37.6%</b>
Nursery nurses and assistants	119	<b>36.8%</b>
Transport and distribution clerks and assistants	156	<b>35.7%</b>
Public services associate professionals	67	<b>34.0%</b>
Marketing associate professionals	384	<b>33.8%</b>
Painters and decorators	73	<b>32.7%</b>
Vehicle technicians, mechanics and electricians	272	<b>32.0%</b>
Ophthalmic opticians	85	<b>30.8%</b>
School midday and crossing patrol occupations	77	<b>30.5%</b>
Merchandisers and window dressers	82	<b>30.2%</b>

## 5. Occupations most severely impacted or experiencing growth



Gyrfa Cymru  
Careers Wales

Occupation (SOC) (Occupations with >50 postings in latest 30 days)	Latest 30 Days <sup>1</sup> <sup>1</sup> Unique Postings (Active)	Latest 30 Days Unique Postings % Change <sup>2</sup> (Active)
Electrical and electronic trades n.e.c.	325	29.0%
Business and related associate professionals n.e.c.	460	28.5%
Laboratory technicians	134	27.6%
Cooks	56	27.3%
Refuse and salvage occupations	116	26.1%
Welding trades	108	25.6%
Telecommunications engineers	51	24.4%
Managers and directors in storage and warehousing	531	23.8%
Business and financial project management professionals	678	23.7%
Sales administrators	127	23.3%
Packers, bottlers, canners and fillers	113	22.8%
Business sales executives	587	22.8%
IT user support technicians	238	22.1%
Psychologists	296	21.8%
Sales and retail assistants	730	21.7%
Records clerks and assistants	220	21.5%
Electricians and electrical fitters	452	21.5%
Postal workers, mail sorters, messengers and couriers	69	21.1%
Estimators, valuers and assessors	116	20.8%
Construction and building trades supervisors	128	20.8%
Health services and public health managers and directors	258	19.4%
Cleaning and housekeeping managers and supervisors	160	19.4%
Occupational therapists	278	19.3%
Medical practitioners	1,175	19.2%

Source: Emsi Labour Posting Analytics, August 2020

<sup>1</sup> Latest 30 days: July 20th-Aug 18th, 2020

<sup>2</sup> Latest 30 days % change: Comparing June 20th-July 19th to July 20th-Aug 18th

## 5. Occupations most severely impacted or experiencing growth



Gyrfa Cymru  
Careers Wales

### Occupations with falling demand in the latest 30 days; July 20th-Aug 18th, 2020

10 occupations with greatest falling demand (greatest % fall) in active job postings in Wales in the latest 30 days include:

- Pharmaceutical technicians
- Conference and exhibition managers and organisers
- Special needs education teaching professionals
- Primary and nursery education teaching professionals
- Metal machining setters and setter-operators
- Caretakers
- Graphic designers
- Education advisers and school inspectors
- Skilled metal, electrical and electronic trades supervisors
- Finance and investment analysts and advisers

During July 20 there was a tail off in demand for Primary and Nursing education professionals and other education roles.

Table:3. % Change (Decreasing) In Unique Job Postings (Active) In Wales In The Latest 30 Days (July 20<sup>th</sup>-Aug 18<sup>th</sup>)

Occupation (SOC) (Occupations with >50 postings in latest 30 days)	Latest 30 Days <sup>1</sup> Unique Postings (Active)	Latest 30 Days Unique Postings % Change <sup>2</sup> (Active)
Pharmaceutical technicians	52	(27.8%)
Conference and exhibition managers and organisers	100	(21.9%)
Special needs education teaching professionals	53	(20.9%)
Primary and nursery education teaching professionals	920	(17.1%)
Metal machining setters and setter-operators	53	(14.5%)
Caretakers	50	(12.3%)
Graphic designers	74	(9.8%)
Education advisers and school inspectors	51	(8.9%)
Skilled metal, electrical and electronic trades supervisors	52	(8.8%)
Finance and investment analysts and advisers	615	(7.2%)
IT operations technicians	232	(6.8%)
Natural and social science professionals n.e.c.	60	(6.3%)
Educational support assistants	274	(6.2%)
Information technology and telecommunications professionals n.e.c.	421	(5.8%)

## 5. Occupations most severely impacted or experiencing growth



Gyrfa Cymru  
Careers Wales

Occupation (SOC) (Occupations with >50 postings in latest 30 days)	Latest 30 Days <sup>1</sup> Unique Postings (Active)	Latest 30 Days Unique Postings % Change <sup>2</sup> (Active)
Quality assurance and regulatory professionals	326	(5.5%)
Fitness instructors	158	(5.4%)
Product, clothing and related designers	76	(5.0%)
Teaching assistants	768	(4.0%)
Managers and directors in transport and distribution	96	(4.0%)
Health professionals n.e.c.	106	(3.6%)
Senior care workers	195	(3.0%)
Programmers and software development professionals	906	(2.8%)
IT business analysts, architects and systems designers	182	(2.7%)
Restaurant and catering establishment managers and proprietors	84	(2.3%)
Assemblers and routine operatives n.e.c.	94	(2.1%)
Legal secretaries	51	(1.9%)
Customer service managers and supervisors	136	(1.4%)
Routine inspectors and testers	143	(1.4%)
Chartered and certified accountants	73	(1.4%)
Pharmacy and other dispensing assistants	75	(1.3%)
Teaching and other educational professionals n.e.c.	160	(1.2%)
Chief executives and senior officials	97	(1.0%)

Source: Emsi Labour Posting Analytics, July 2020

<sup>1</sup> Latest 30 days: July 20th-Aug 18th 2020

<sup>2</sup> Latest 30 days % change: Comparing June 20th-July 19th to July 20th-Aug 18th



Skills are defined by Emsi as:

### Hard Skills

(mostly job specific):

Hard skills are abilities that have been taught to or learnt by a person.

### Common Skills

(largely common to many jobs):

Common skills are self-developed or personal attributes.

Source: Emsi, 2020

### Top 'Hard' Skills (job specific skills) in demand in Wales remain :

- Nursing
- Auditing
- Mental Health
- Personal Care
- Key Performance Indicators (KPI's)
- Accounting
- Agile Software Development
- Warehousing
- Business Development
- Selling Techniques

### The top 10 'Common' Skills (common to many jobs) in demand in Wales remain :

- Communications
- Management
- Customer Service
- Enthusiasm
- Sales
- Leadership
- Teaching
- Detail Oriented
- Innovation
- Operations

## 7. Sectors most severely impacted by the COVID-19 Crisis



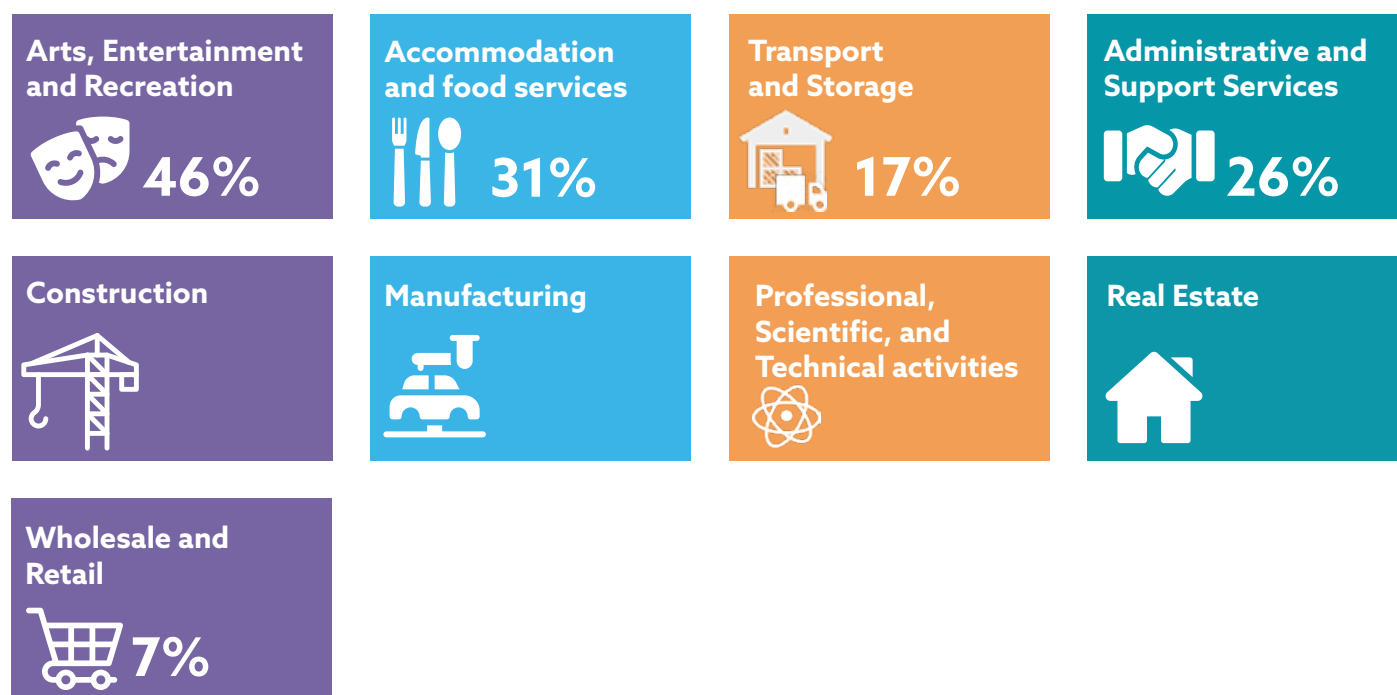
Gyrfa Cymru  
Careers Wales

We reported in the last Bulletin that at the beginning of August 20 the UK had officially entered recession. [The latest ONS data](#) (released 13th August) showed that GDP had fallen by 20.4% in Quarter 2 to the end of June 20. This is the second consecutive quarterly fall in GDP. The recession brought on by the coronavirus pandemic has led to the biggest fall in quarterly GDP on record. (ONS, August 20)

### Highlights from the latest ONS fortnightly survey of businesses

(relating to period 13 July 2020 to 26 July 2020)

The number of workers furloughed across all industries in the UK, had fallen to 14%, at August 13, 2020. Across the sectors, the percentage of % of workers still on furlough included:



The number of workers furloughed across all industries in the UK, had fallen to 14%, at August 13, 2020. Across the sectors, the percentage of % of workers still on furlough included:

- Whilst it remains the sector with the highest number of furloughed workers, at 46%, the arts, entertainment and recreation sector reported the highest proportion of the workforce returning from furlough leave in the last two weeks, at 25%, followed by the accommodation and food service activities sector and the construction sector, at 17% and 10% respectively.

[Read the latest ONS, Coronavirus and the economic impacts on the UK](#)



## 8. Redundancies



Gyrfa Cymru  
Careers Wales

Research has found that one in three businesses across the UK expect to make job cuts by October as the governments furlough scheme is withdrawn ([Retail gazette, August 2020](#))

Some of the latest and previous press announcements on redundancies and jobs at risk across Wales, the UK and globally:

Company	Planned job cuts or jobs at risk
BA	12,000
Virgin Atlantic	3,000
Easyjet	4,500
Ryan air	3,000
M&S	7000
Swissport	4,175
Centrica	5,000
Ovo Energy	2600
BP	110,000 global
Bombardier	600
Rolls Royce	9000
Bentley	1000
Jaguar Land Rover	1100
Airbus	1,700
Aston Martin	500
HSBC	35,000 global
TSB	929
G4S	1,150
Accenture	900
Johnson Matthey	2,500
The Restaurant group	1,500
Monsoon	545
Clarks	900
Oasis and Warehouse	1800
Mulberry	470
John Lewis	1300
TM Lewin	600
Boots	4000

## 8. Redundancies



Gyrfa Cymru  
Careers Wales

Company	Planned job cuts or jobs at risk
Burger King	1600
Travis Perkins	2500
DW Sports	1700
Pizza Express	1100
Dixons Carphone	800
Debenhams	6500
BBC	970
Guardian Media	180
Arup	350
Pret A Manger	1000
Nat West	500
Tyson Foods	71
Travelex	1300
Costa	1600
DHL	2000
Celtic Manor	450
Millennium Centre	250
GE	369
WH Smith	1500

### Redundancy rate monitoring (UK) ; latest 3 month rolling period. April-June 2020

The number of redundancies per 1000 workers across all sectors in the UK, rose again to 4.8 for the latest 3 month rolling period, April to June 2020. These latest figures continue to reflect the growing number of companies reporting job losses.

During the last recession, the redundancy rate was 12.2 per 1000 employees at its peak (Feb-Apr 2009)

#### LFS: ILO Redundancy rate UK since 2008 (per 1,000 workers)



(Source: ONS, Labour Force Survey, Apr-Jun 2020 Next release: 15 Sept 2020)

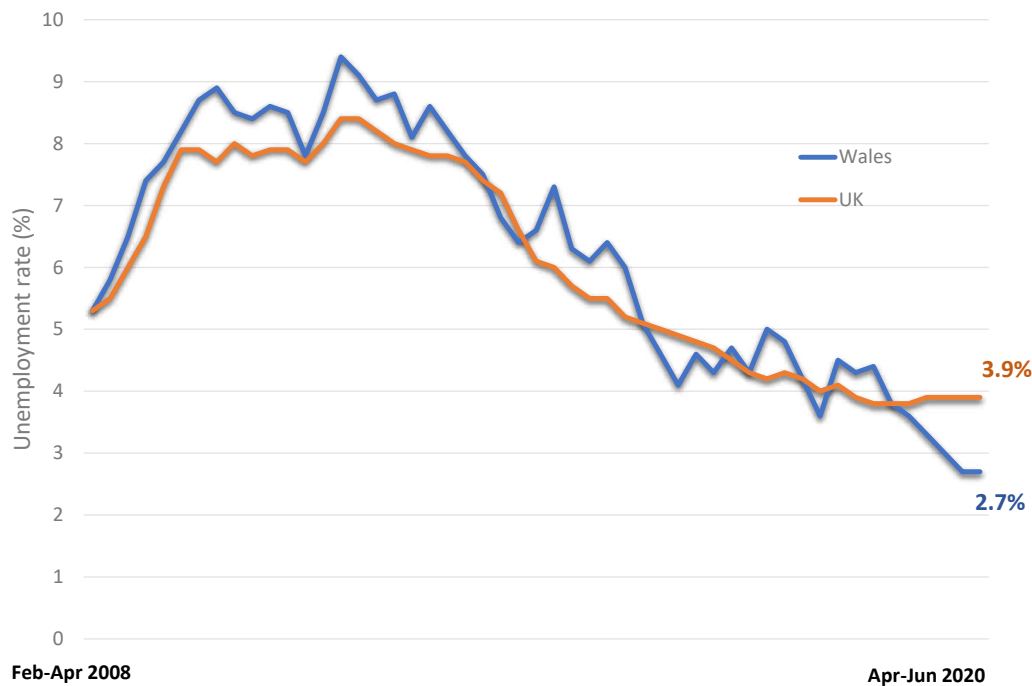
## 9. Unemployment/Employment, Claimant count and Universal Credit; March-May 2020



Gyrfa Cymru  
Careers Wales

- The LFS: ILO unemployment rate for Wales remained at 2.7%, Apr-Jun 2020, compared to 3.9% for the UK

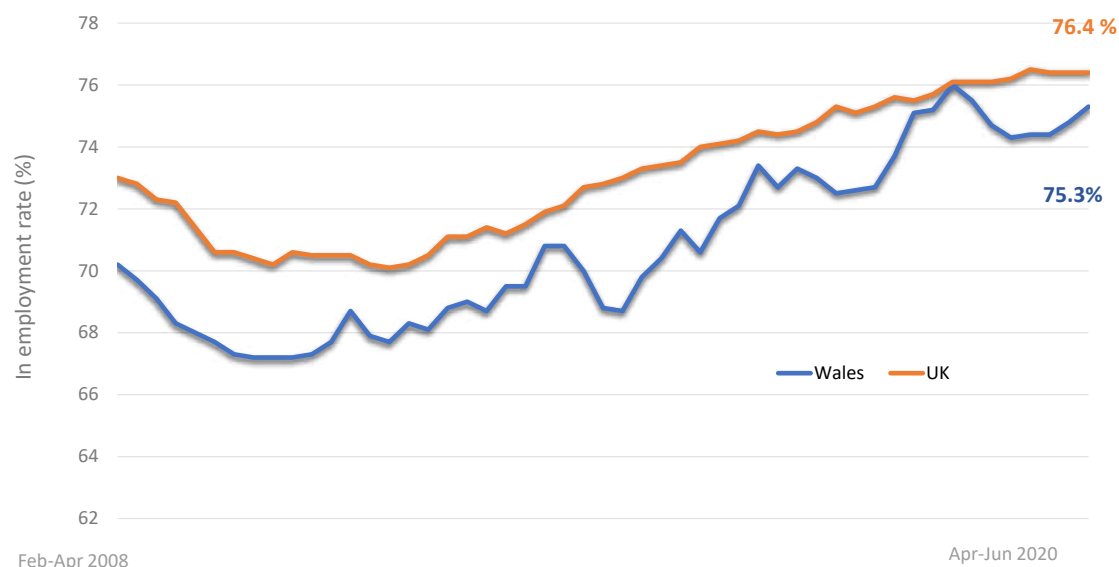
### Unemployment Rate Wales since 2008



(Source: NOMIS Labour Force Survey, Apr-Jun 2020)

- Employment rate in Wales increased slightly to 75.3%. Apr-Jun 20, consistently lower than for the UK as a whole (76.4%)

### Unemployment Rate (%) Wales:UK

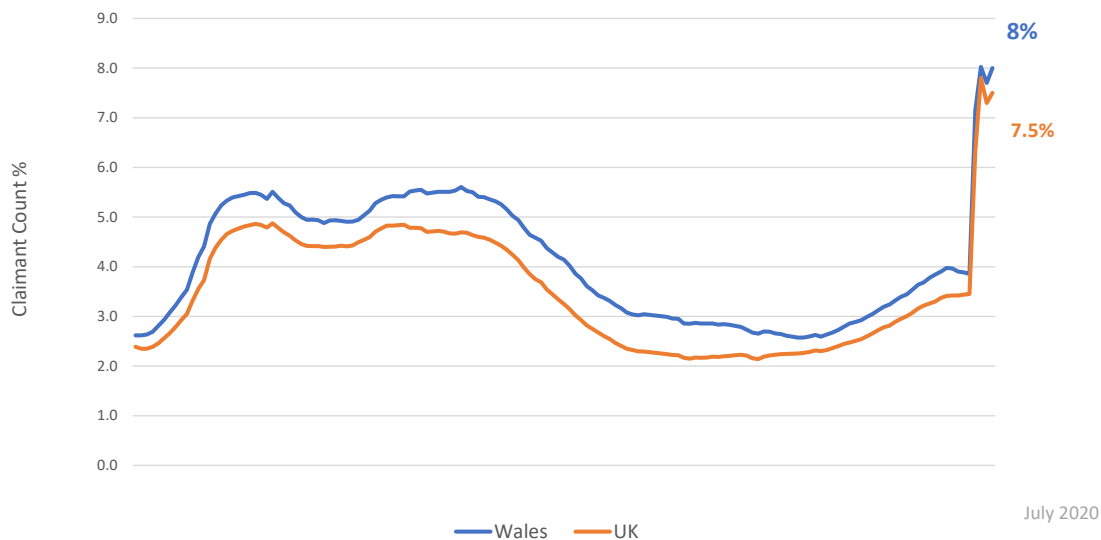


Source: NOMIS: Labour Force Survey, Apr-Jun 2020



In July, claimant rate rose to 8% in Wales and 7.5% in the UK, Claimant count numbers have more than doubled in Wales and the UK since 2020.

### Claimant Count: Wales & UK since 2008



Source: NOMIS: ONS Claimant Count: Seasonally Adjusted, July 2020

Claimant Count % = number of claimants as % of total workforce jobs

	Wales		UK	
	Claimants	Claimant rate %	Claimants	Claimant rate %
March 2020	58,576	3.9	1,240,122	3.5
April 2020	108,610	7.2	2,272,812	6.3
May 2020	121,858	8.0	2,801,729	7.8
June 2020	117,085	7.7	2,631,384	7.3
July 2020	120,870	8.0	2,688,694	7.5



- [UK gov coronavirus Guidance and Support](#)
- [Welsh Government Coronavirus \(Covid-19\)](#)
- [Business Wales COVID-19 Support for Businesses](#)
- [Self-employment income support](#)
- [ONS Coronavirus and the economic impacts on the UK](#)
- [ONS Coronavirus \(COVID-19\) roundup](#)
- [Welsh dashboard for Universal Credit](#)
- [Welsh Government COVID-19 and the production of statistics and social research](#)
- [Public Health Wales Rapid COVID-19 surveillance - COVID-19 cases, deaths and testing in Wales](#)
- [The Money Advice Service: Money Navigator Tool](#)

### Useful resources on Careers Wales and Working Wales

- [Job Bulletin](#)
- [Employers who offer Apprenticeships](#)
- [Getting a job](#)
- [Redundancy Support](#)
- [Furlough Support](#)
- [Employers recruiting now](#)
- [Start learning today : New online learning platform](#)

### Support resources DWP

- ['Find A Job' Job vacancies](#)
- [Employer Help'](#)
- ['Job Help'](#)



### Cautionary notes on the use of LMI data sources in the current environment

- The latest official labour market statistics (e.g. Labour Force Survey; latest release 16 June, for period February – April 2020.) that give estimates of unemployment and employment do not yet reflect the impact of Coronavirus on the labour market in Wales but provide us with an initial benchmark. Equally, the full impact is unlikely to be clear until Government support schemes such as Furlough (currently extended to October 2020)

The hard-national data sets (based on surveys) which will give us a more robust indication of the full impact have a time lag before publishing. The earliest release of the major national economic data sets covering Q.2 (Workforce Jobs and the Annual Population Survey) will not be available before September or October.

- Job posting figures are one of the first data sets to give an immediate indication of the impact on the labour market but are only an indication given:
  - They only reflect a proportion of all job vacancies, excluding informal recruitment..
  - In these exceptional times usual recruitment methods have changed drastically, particularly for Health and Care workers who have been recalled directly, head hunted etc.
  - Real impact will only start to be seen when lock down lifts, furlough support begins to ease etc.
  - The absolute numbers should be used with caution as they provide only a snapshot of the total recruitment picture, and the method of collection is constantly being improved but the general trends seen can give us an idea of how job opportunities in Wales are being impacted.
- Projections of employment which we usually use from our data suppliers such as EMSI are 'estimates of future trends based on past and current trends' so where projections are used they may be based on pre-crisis trend data, until Economic forecasting is available that models forecast scenarios of the impact of current events.

This bulletin is intended to be a shared product and developed as the impact of the COVID-19 becomes clearer and data improves. Please give your feedback and suggestions for LMI contributions or other topics to measure the impact on our economy and labour market by emailing: [information@careerswales.gov.wales](mailto:information@careerswales.gov.wales)