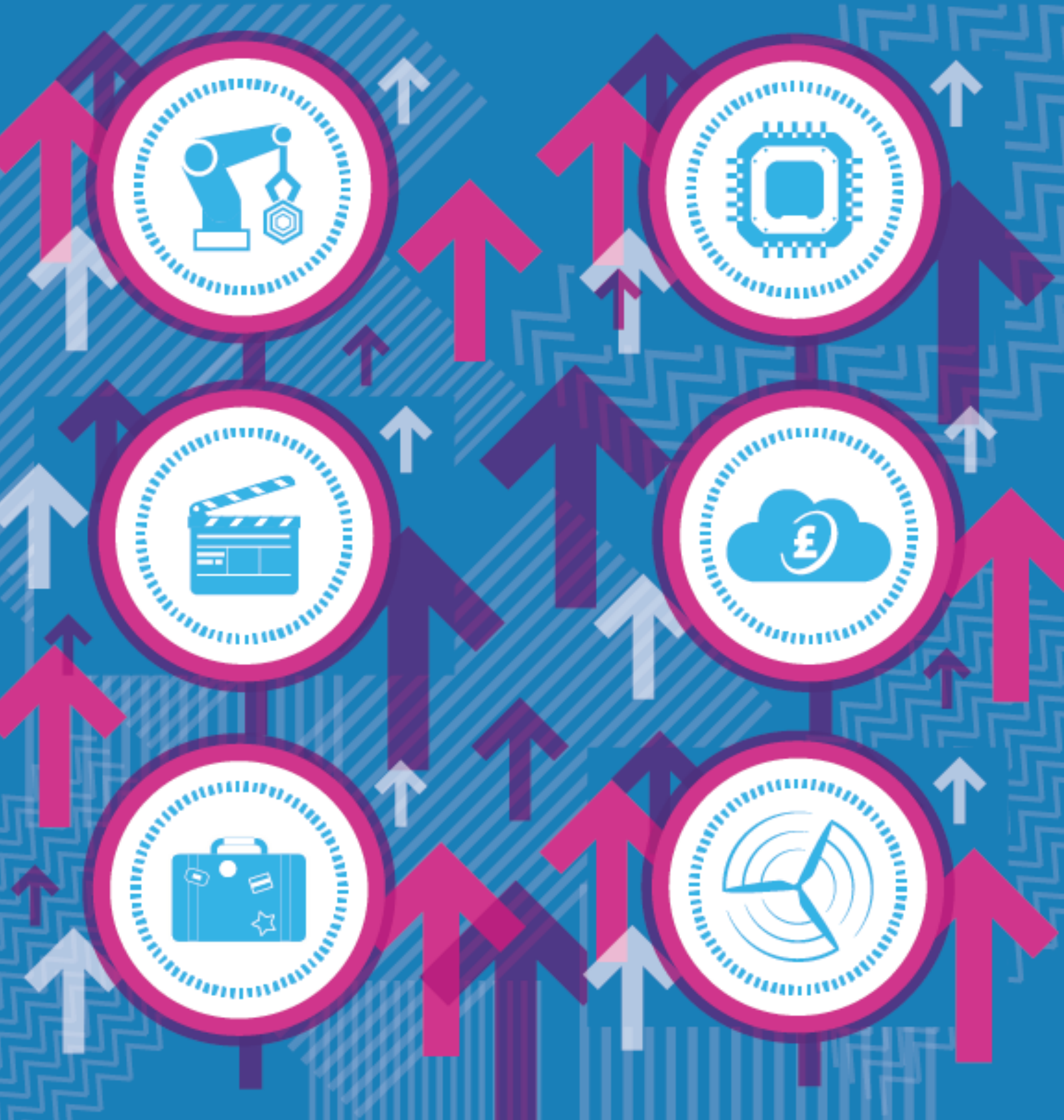




Gyrfa Cymru
Careers Wales

Careers Wales LMI Bulletin Feature: June 2024

Future Jobs Wales





NEW Labour Market Information (LMI) - FUTURE JOBS WALES

Future Jobs Wales is Careers Wales’ latest interactive labour market information (LMI) product that presents up to date LMI trends on the regions and industries in Wales.

You can find Future Jobs Wales on the Careers Wales website home page, look for the icon.



Future Jobs Wales

Explore Wales’ regions and industries. Learn what jobs you could do, now and in the future.

There are two options for customers to browse LMI in Future Jobs Wales

- Specific Industry focus, or
- Specific region of Wales

Both options allow customers to filter the LMI data by each local authority in Wales.

There are currently 3 Industries available:



Jobs in Construction



Jobs in Energy



Jobs in Health

The full series will feature 16 different industries, in development during 2024-25.

What about local LMI ?

The latest development in the Future Jobs Wales series presents LMI on the 4 regions of Wales, with a new focus on skills in demand. It was developed in consultation with the 4 Regional Skills Partnerships in Wales.

The Regional Future Jobs Wales contains LMI on 15 different industries in Wales.



Jobs in North Wales



Jobs in Mid Wales



Jobs in South West Wales



Jobs in South East Wales

What does Future Jobs Wales do?

It's an interactive product which aims to tell the LMI story of the different industries in Wales; how big they are, what sort of job opportunities they offer, if they are expected to grow, and which jobs are most in demand in Wales, across the regions and local authorities of Wales.

Users can explore:

- Labour market trends in their local area
- Compare trends with the bigger picture for Wales and the UK
- An overview of the industry
- What's new in the industry and the skills in demand
- Size of the industry
- A selection of Job roles and approximate pay ranges
- Future growth: is the industry expected to grow or shrink in the next 5 years?
- Which jobs are in demand now, what are the top job vacancies?
- Links to more individual job profiles from our [Job Information](#) page



Where does the data come from? How will it be kept up to date?

The data is sourced from:

- [Lightcast™](#), a global licensed labour market information repository and modelling company.
- Our own, Careers Wales LMI research.

Lightcast™ data is created from a collection of government sources. We use a direct data feed (api) from Lightcast™, which allows us to keep the data up to date.

Lightcast™ also provide data analytics on job postings (online job vacancies). They search and filter 1,000's of online job vacancies to enable us to present the latest information on jobs and skills in demand.

Standard Occupational Classification 2020

As part of this new development, we have updated all data presented to the latest version of the ONS Standard Occupation Classification (SOC 2020).

Find out more about [Careers Wales data sourcing](#).

Let us know what you think!

This is a beta version of Future Jobs Wales and the first iteration of an LMI product that we will develop going forward.

We want to hear what you think about the new product:

- Is the content valuable?
- What's missing?
- How can we improve it?

We will be carrying out a formal evaluation but welcome any comments and suggestions. Please get in touch information@careerswales.gov.wales